

THE
**APARTMENT
 SERVICE**
 WORLDWIDE

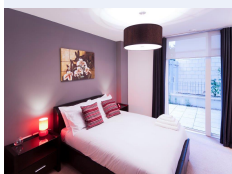
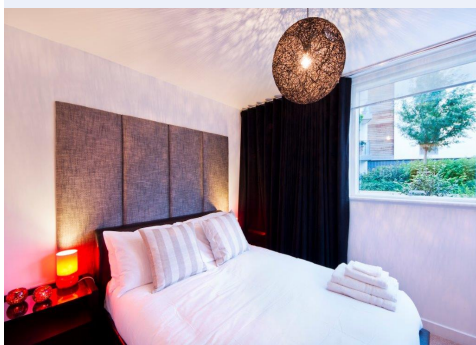
Great West Quarter - Golden Mile House

Brentford

Located within the Great West Quarter on the border of Chiswick and Ealing. The Great West Quarter is a visionary development of fantastic scale and an easy commute to central London and Heathrow airport. The Golden Mile House apartments are two bedroom with one en-suite bathroom to the master bedroom and a full separate bathroom in the apartment. There is a concierge on site and all residents are allowed to use the on-site gym. Underground secure car parking is available for residents.

The apartment has two terraces, full kitchen facilities including fridge freezer, full oven, microwave oven, dishwasher and washer dryer and come with "walk in" dressing room to the master bedroom.

For shopping, socialising and relaxing, GWQ makes it easy. Close to Chiswick's trendy shops, riverside restaurants and cafes, it's no surprise that The Great West Quarter is the popular choice for London living at an out of town price. Hit Chiswick's chic boutiques just a stone's throw away for a spot o...



Clayponds Lane, Golden Mile House

Property Details

Apartment Type Name	Max Occupancy	Min Stay
2 Bedroom / 2 Bath (Local rates and taxes may apply)	4	30 nights

Amenities

- Colour Television
- Full kitchen
- Pots and pans
- Underground secure car ...
- concierge on site
- Iron
- Room service
- Dishwasher
- Ironing board
- Sitting area
- Exercise gym
- Microwave
- Telephone

The Apartment Service, 5-6 Francis Grove,
 London, SW19 4DT
 Fax: +44 (0) 20 8944 6744
 Tel: +44 (0) 20 8944 3612
 info@apartmentservice.com
 www.apartmentservice.com